

207' PSV SEACOR MADISON



207' PSV SEACOR MADISON

MAIN PARTICULARS

LENGTH OVERALL	207 ft.	63 m
LENGTH BP	195 ft.	59 m
BEAM	53 ft.	16 m
DEPTH	19 ft.	6 m
LIGHT DRAFT	7 ft.	2 m
LOADED DRAFT	16.2 ft.	5 m
SUMMER FREEBOARD	2 ft.	1 m
LIGHTSHIP	1,406 LT.	1,432 MT.

CAPACITIES

DRILL WATER	219,610 USG	1,142 m ³
POTABLE WATER	43,851 USG	166 m ³
FUEL	246,663 USG	934 m ³
LIQUID MUD	6,223 BBLs	989 m ³
DRY BULK	6,000 ft. ³	170 m ³
BRINE	6,223 BBLs	989 m ³
BASE OIL	6,223 BBLs	989 m ³
DEADWEIGHT	2,278 LT.	2,319 MT.

CARGO DECK

TONNAGE	1,740 LT.	1,772 MT.
STRENGTH	540 lbs./ft. ²	5,273 MT./m ²
LENGTH	145 ft.	44 m
WIDTH	45 ft.	14 m
CLEAR AREA	6,525 ft. ²	606 m ²

TONNAGE

GRT	1,598 tons
NRT	479 tons

MACHINERY

MAIN ENGINES	2xCat 3516B LS
BRAKE HORSEPOWER	4750
REDUCTION GEARS	N/A
PROPELLERS	2 SteerProp SP25 2.4
RUDDERS	N/A
SHAFT GENERATORS	N/A
AUXILIARY GENERATORS	N/A
EMERGENCY GENERATOR	SOLAS 105 KW
BOW THRUSTERS	2 x 1050 BHP SMI (CPP)
STERN THRUSTER(S)	N/A
LIQUID MUD CIRCULATION	Vortec Venture System

TOWING & ANCHOR HANDLING

TUGGER WINCHES	1 x 10 LT. / MT.
CAPSTANS	N/A 0 LT. / MT.

PERFORMANCE

MAXIMUM SPEED	13 knots	
CRUISING SPEED	11 knots	
MAXIMUM FUEL CONSUMPTION	160 USG/Hr	15 m ³ /24 Hrs
CRUISING FUEL CONSUMPTION	120 USG/Hr	11 m ³ /24 Hrs

DISCHARGE RATES

DRILL WATER	600 USG/min @ 200 ft.	136 m ³ /Hr @ 61 m
POTABLE WATER	250 USG/min @ 200 ft.	57 m ³ /Hr @ 61 m
FUEL	600 USG/min @ 200 ft.	136 m ³ /Hr @ 61 m
LIQUID MUD	1,000 USG/min @ 165 ft.	227 m ³ /Hr @ 50 m
DRY BULK	735 ft. ³ /Hr @ 80 PSI	21 m ³ /Hr @ 6 bar
BRINE	1,000 USG/min @ 165 ft.	227 m ³ /Hr @ 50 m
BASE OIL	1,000 USG/min @ 165 ft.	227 m ³ /Hr @ 50 m

ACCOMMODATIONS

CABINS/BERTHS	11/Berths 28
OFFICERS	1 Single, Desk & Private Head
CREW	6 Dbls w/desks & 5 Private Heads
VIP	1 Double & Private Head
PASSENGERS	3 Quadruples with Head
LOUNGE	13
MESS	12

ELECTRONICS & CONTROLS

JOYSTICK	4- K-Sim
DEPTH SOUNDER	JRC IES-10
DYNAMIC POSITIONING	K-Sim DPS-2
GPS	2x Included w/DPS
GYRO	2x Included w/DPS
RADAR(S)	2 ea. JRC JMA 7710-6
RADIO SYSTEM	A3 GMDSS
SSB	GMDSS
VHF	3X Standard Horizon
INTERNET E-MAIL	Globe Wireless
WEATHER RADIO	XM

SPECIAL EQUIPMENT

CRANE	N/A 0 LT @ 0 ft. - 0 MT @ 0 M	
EXTERNAL FIFI	2100 GPM; Stang Mfg#D0263-11EP	
SURVIVAL CRAFT	(6) 15 Man Inflatable Liferafts	
WINDLASS	Coastal Hyd 2 Inches 1,080	51 mm 329
RESCUE BOAT	Solas Rib w/60HP Motor	
WATER CAPACITY	0 GPM @ 0 ft. @ 0 psi	0 M3/Hr @ 0 M. @ 0 bar
NUMBER OF MONITORS	0	

DOCUMENTATION

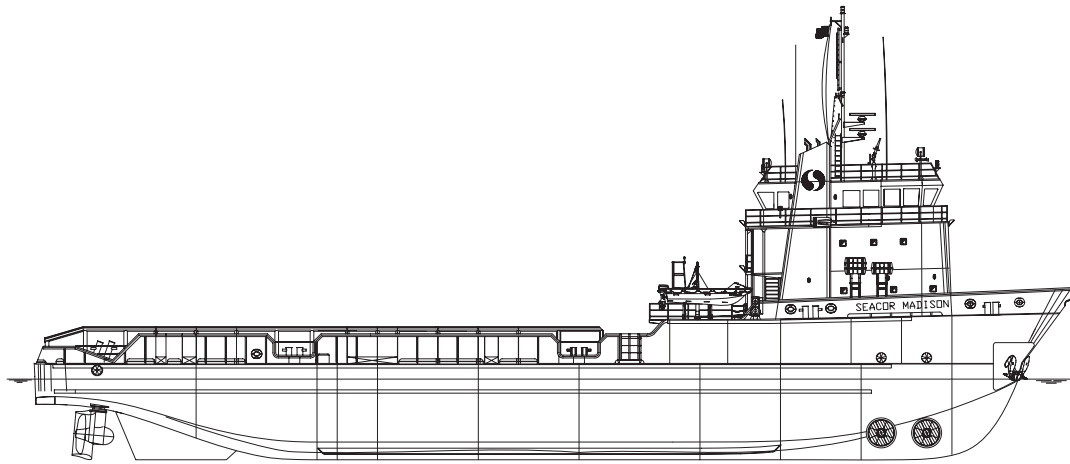
CLASS	207 FT. PSV / DP-2
FLAG	United States
SOLAS	Full
USCG	ABS +A1 AMS DP-2
YEAR BUILT	2003
OFFICIAL NUMBER	1136167
RADIO CALL SIGN	W.D.D. 5977
BUILDER	Bollinger Lockport

This specification is preliminary and subject to change without notice. Exact tank capacities, deadweight, deck cargo capacity and other figures that have been calculated and may change when the actual vessel is delivered.

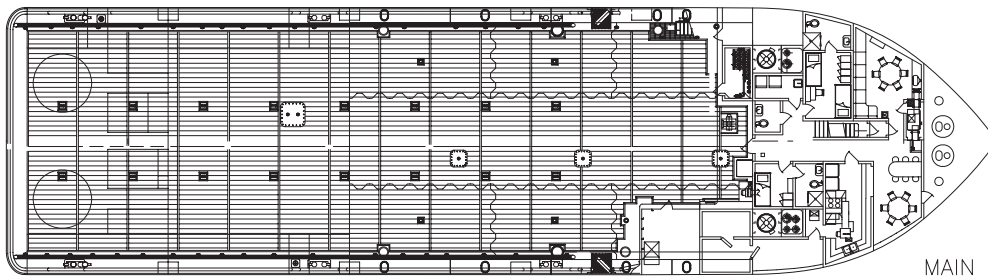
207' PSV SEACOR MADISON



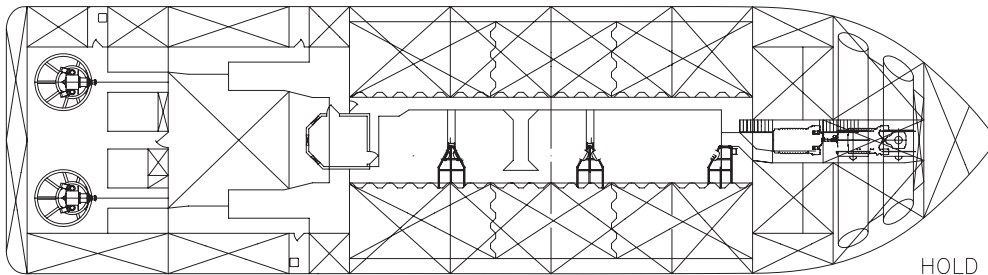
207' PSV SEACOR MADISON



OUTBOARD PROFILE



MAIN DECK



HOLD PLAN